



# Núcleo de Espeleologia de Leiria

Www.nel.pt

## Penha da Falsa

Carlos Lemos, Pedro Galvão

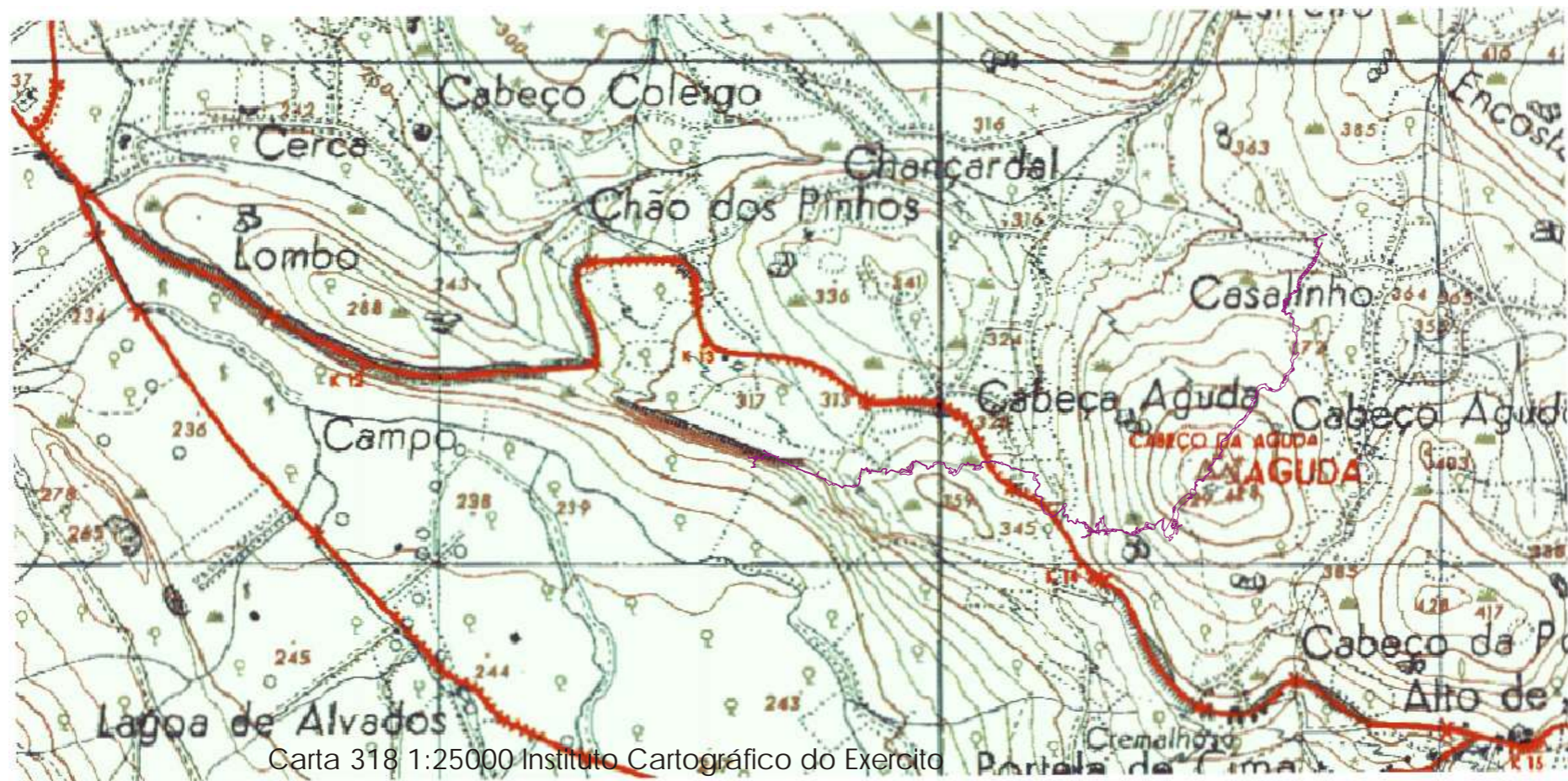
The "Pena da Falsa" is named due to its unpredictable, violent and destructive behavior, as a matter of fact, this surge can easily have enormous hydric activity since the first rains began. However, is possible that in some years other surges have activity instead of this one, which is justified because it is in a fossilization process and the initial elevation is 260m slight superior to the initial elevation of Minde polge, at East, and Alcaria, at west, with 200m. The

localization of the system suggests that the drainage of Fátima's upland infiltration waters can happen.

This cavity is characterized by the peculiar, diversified morphology and by the extreme difficult progression which demands great perseverance and effort.

Perhaps, this was the reason why the explorations taken by several Portuguese grottos have been so widely spread all over the years.

- The first story known was about an expedition started in 1960, orientated by Diogo Abreu exploring approximately 400m of the cavity.
- In 1970 Pedro Marote of CNJE- Centro Nacional da Juventude para a Espeleologia started another expedition that reached 650m and took 20 hours.
- In 1983, after the entrance pit was dynamited by local inhabitants of Alvados, NEUA- Núcleo de Espeleologia da Universidade de Aveiro reached 800 m, followed by NEL that reached 1000 m in the same year.
- In 1984 Charles Dubourg e Cristian Thomas reached 1350m
- In 1985 NEL (António Fael, Joaquim Galvão), João Neves, Christine e Cristian Thomas reached 2000m.
- In 1991 and 1996 NEL organized two great expeditions that permitted to reach what is today's record of the cavity based on 2238m.



### Bibliography:

- [1]-Grottes et Algaes du Portugal, C.Thomas, 1985
- [2]-Carta 318 1:25000 Instituto Cartográfico do Exército